



## DESKTOP & WEB BASED GIS APPLICATION

- ① System study
- ① Development of software
- ① Map & data base integration
- ① Development, testing & implementation
- ① Training
- ① AMC
- ① Remote sensing data analysis



## SOFTWARE WE OWN

- ① Arc GIS 10.4 server & desktop
- ① AutoCAD civil 3D
- ① Terrasync professional software



## PROJECT MANAGEMENT

- ① Inspection of equipment & expediting services
- ① Project monitoring & control
- ① Quality assurance & inspection
- ① Our project management group provide assistance during procurement, tender management, negotiation & award.

- ① Digital mapping & cartography
- ① Remote sensing
- ① Day to day monitoring of multi-disciplinary projects including inspection of equipments, erection & fabrication of steel structures and site supervision of civil works and other rich areas.
- ① GIS consultation & implementation
- ① Web GIS development
- ① Utility mapping
- ① Geo-database design & management
- ① Data collection & survey
- ① Digital photogrammetry

# LAST PEAK



02, RAWDON CHAMBERS  
11A, RAWDON STREET  
KOLKATA- 700 017

**+91 33 40648025**



**+91 33 22871805**

**accounts@lastpeak.com**



## Last Peak



## QUALITY ABOVE ALL ELSE

**ISO 9001:2015**



**www.lastpeak.com**

**We** offer a full spectrum of GIS/RS services and solutions, ranging from Spatial Data Mapping & analysis to document management/ archiving & physical survey.

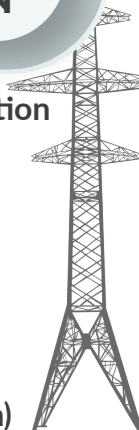


**Our** skills supported by our credentials and work experience satisfy the needs of our esteemed clients with a range of solutions varying from utility/ facility/ social mapping, Web GIS based MIS-Generation, site selection, problem area identification supported with data archival and retrieval.



## DATA CONVERSION

- Scanning/digitization/vectorization
- Cadastral mapping
- E-book creation
- Data entry & tabulation
- Image conversion through OCR (Optical Character Recognition)
- OMR (Optical Mark Recognition)
- Tabular data plotting & map generation



## DATA MANAGEMENT

- Document Management System (DMS)
- Legacy Data migration through raster to vector conversation
- Geodatabase creation & management

- Retrieving old brittle maps/drawings image cleaning & editing



## IMAGE PROCESSING

- Georeferencing & seamless data mosaicing
- Resolution improvement & merging/ noise reduction
- Geo positioning
- Image fitting
- Change detection study from multi-temporal imagery



## REMOTE SENSING & GIS BASED SOLUTION (GEO SPATIAL SERVICES)

- Digital mapping & cartography
- Land use/land cover mapping
- Vector updates (Transport Network Mapping)
- Remote sensing data analysis



## SURVEY

- Underground utility management system (underground pipe/cable survey using EPL/ECL & GPR instruments/ depth assessment)

- GPS survey of electrical network (HT/LT electrical transmission/ distribution lines-cables & feeders survey- handheld GPS, DGPS & mobile application)
- Consumer indexing & asset codification
- Cadastral survey
- Topographical survey
- Door-To-Door (contact) survey



## DRONE SURVEY & MAPPING

- Power line inspection using drone technology
- Oil and gas inspection using drone technology
- Wind turbine inspection using drone technology
- Telecom inspection using drone technology
- Survey and mapping using drone technology



## PROJECT MANAGEMENT ASSOCIATES & THIRD PARTY INSPECTION

Project monitoring and supervision of quality as a third party implementing agency.